

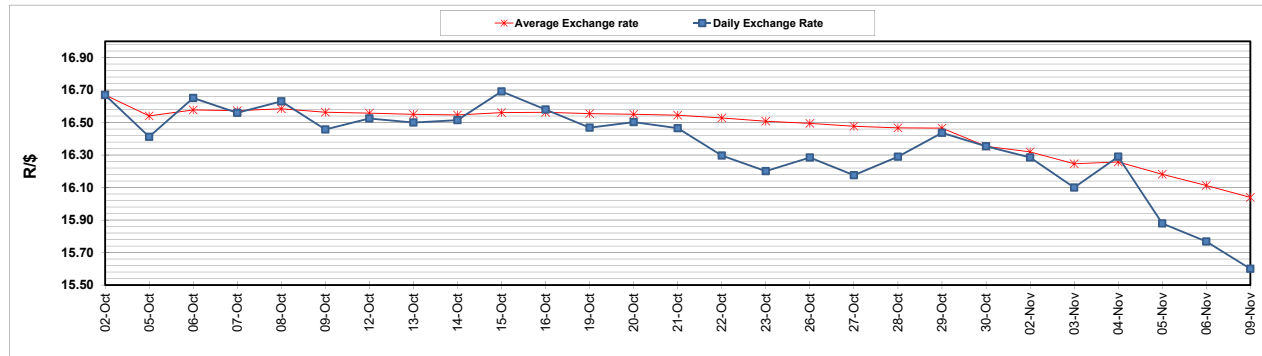
	PETROL 95 ULP	PETROL 93 ULP & LRP	DIESEL 0.05%	DIESEL 0.005%	ILL. PAR.
GAUTENG PUMP PRICE (SA c/l) AS FROM 04/11/2020	1,459.000	1,439.000	-	-	-
WHOLESALE PRICE (SA c/l) AS FROM 04/11/2020	-	-	1,225.560	1,227.960	655.828
SINGLE NATIONAL MAXIMUM RETAIL PRICE	-	-	-	-	818.000
BASIC FUEL PRICE - 09/11/2020 (SA c/l)	479.677	468.262	470.820	473.084	458.139
PRESS RELEASE CONTRIBUTION TO BFP 04/11/2020 - 09/11/2020 (SA c/l)	506.470	496.470	474.630	477.030	451.128
UNIT OVER/(UNDER) RECOVERY - 09/11/2020 (SA c/l)	26.793	28.208	3.810	3.946	(7.011)
AVERAGE BASIC FUEL PRICE 30/10/2020 - 09/11/2020	468.858	460.655	460.584	463.825	444.737
AVERAGE UNIT OVER/(UNDER) RECOVERY 30/10/2020 - 09/11/2020	49.183	47.386	19.189	17.919	(0.038)

ANALYSIS MOVEMENT OF AVERAGE OVER/(UNDER) RECOVERY

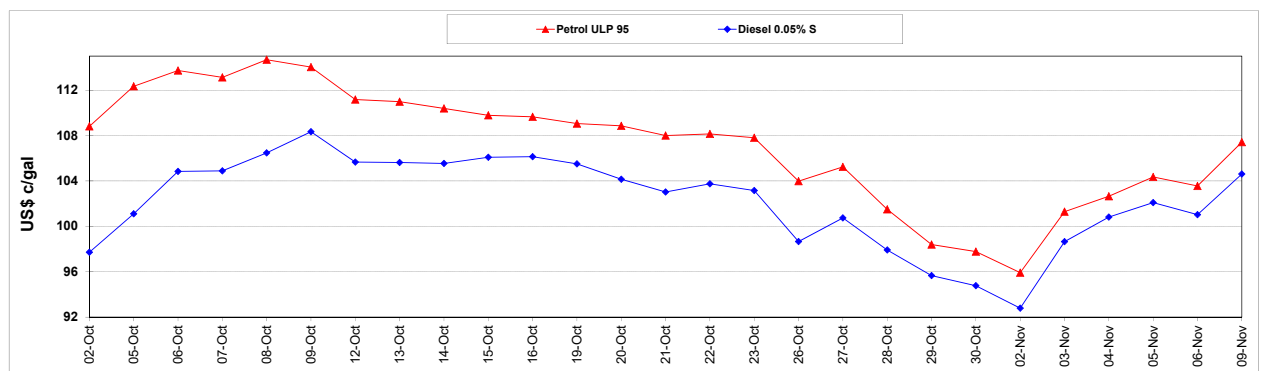
	PETROL 95	PETROL 93	DIESEL 0.05%	DIESEL 0.005%	ILL. PAR.
- MOVEMENT IN INTERNATIONAL PRODUCT PRICES	36.722	35.143	6.947	5.591	(11.858)
- MOVEMENT IN EXCHANGE RATE	12.461	12.243	12.242	12.328	11.820
AVERAGE UNIT OVER/(UNDER) RECOVERY 30/10/2020 - 09/11/2020	49.183	47.386	19.189	17.919	(0.038)

R/\$ EXCHANGE RATE - (R/\$15.6000 - 09/11/2020)

EXCHANGE RATE USED IN BASIC FUEL PRICE



INTERNATIONAL PRODUCT PRICES OF BASKET USED IN BASIC FUEL PRICE



BASIC FUEL PRICE IN SA CENTS PER LITRE

